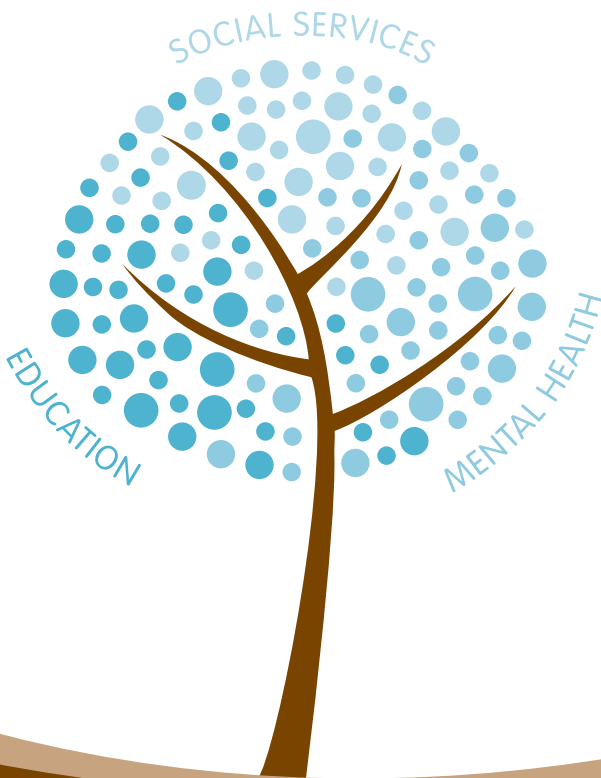




WESLEY SPECTRUM
SERVICES

What We Offer



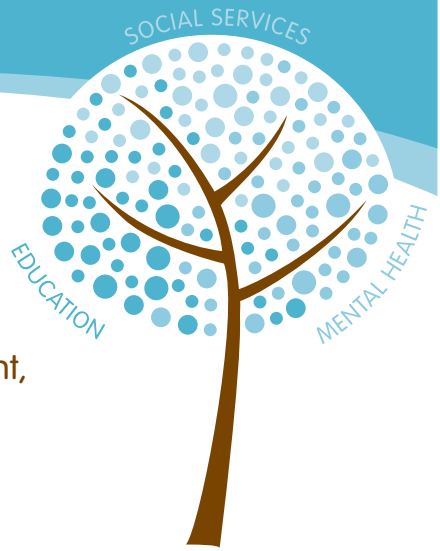
About Us

Our Mission:

Our mission is to provide transformational support for children and families as they strive to become more independent, responsible and caring members of the community.

Our Vision:

We Will Be The Regional Provider Of Choice
And A Global Resource For Human Services.



Wesley Spectrum provides a diverse range of education, mental health, and social services to individuals and families in Western Pennsylvania. We create life-changing support by integrating our services to best meet the needs of those we serve. Our passion is to foster recovery by helping children, adolescents, individuals, and families build resiliency skills to cope with life adversities and challenges.

We put the people we serve first, and acknowledge the value and strength of every person, creating individual plans to help each client reach his or her true potential. We are also proud to be advocates for those we serve, helping the community understand that the needs of people with developmental, educational, and behavioral health challenges affect us all.

Program Descriptions & Contact Information

THE WESLEY SPECTRUM FAMILY AND CHILD DEVELOPMENT CENTER

Provides high quality services tailored to meet the needs of children and adults on the autism spectrum.

- *BHRS (Behavioral Health Rehabilitation Services)*: provides intensive, behavior focused therapy conducted by trained clinicians and therapists. These services can take place in the home, school, or community. A master's level clinician will work with the treatment team to create and monitor a treatment plan, inclusive of all goals specific to the child and family. The clinician can work in conjunction with your child's school, outside therapists, and other community members to assure continuity of care. This master's level clinician will also supervise other BHRS treatment team members, including a bachelor's level therapist who would provide one-on-one support and behavioral interventions.
- *Brief Treatment*: provides coordinated and faster access to behavioral health rehabilitation services by eliminating the need for a current best practice psychological evaluation. Families in Allegheny County have the opportunity to work with a behavior specialist or therapist for up to six hours per week. Behavioral interventions and functional behavioral assessments can be implemented in the home, school, and community as we work collaboratively to strengthen your child's natural supports. Our goal is to provide transformational support while facilitating growth and building resilience within the family.
- *Wonder Kids (WK)*: offer children on the Autism Spectrum the chance to learn social skills. With small, therapeutic groups, children are able to learn how to interact with their peers in appropriate ways. WK teaches the subtleties of communication such as eye contact, gestures, jokes, and initiating and sustaining conversation. Many of our kids would like to engage in play and

What We Offer

conversation with their peers, but do not know how to successfully do so. WK works to help increase self-awareness as well as identify and decrease behaviors that may be inappropriate in social situations.

- *Wesley Spectrum Young Adults (an affiliate of WK)*: a new opportunity for adults on the autism spectrum or with related diagnoses. Our social group focuses on teaching self-advocacy skills in preparation for more independent living. Topics such as job skills, college, and interpersonal relationships will be explored. The adult group meets on a weekly basis, and any adult between the ages of 18 and 25 is welcome to attend.
- *Creative Arts*: offers an innovative approach to therapy. Our Creative Arts program has redefined the typical therapeutic group to include not only children, but their families, as well. Children with or without a diagnosis are welcome, as our certified music therapists will work to assure that each child benefits individually. Creative therapies can help any child by using multiple modalities to help them learn self expression and positive outlets, as well as enhance their creative play and imagination. Our certified music therapists offer private, group, and family instruction in the following areas: rhythm, movement, vocal, and instrumental. The program even offers the opportunity to join a rock band.

**5465 William Flynn Highway
Gibsonia, PA 15044**

**Serving the following counties: Allegheny, Armstrong, Beaver,
Butler, Lawrence, Washington, Westmoreland**

P: 724-443-4888

F: 412-347-3237

Program Director: Kristen Volosky

Referrals: Ashley Bielewicz or Erin Benacquista

Diverse Range of Services

WESLEY SPECTRUM ACADEMY

A Private Academic School for students in need of academic, social and therapeutic support provided in a small, structured learning environment. The Academy accepts gifted to average ability learners with academic and personal challenges, which may include: poor study skills, non-traditional learning styles, ADHD, depression, school anxiety and phobia.

243 Johnston Rd.

Pittsburgh, PA 15241 (Upper St. Clair)

Program Director: Amy Townsend

Associate Director and Referrals: Melissa Garvin at 412-833-6444

WESLEY SPECTRUM HIGHLAND SERVICES

An Approved Private School and a school-based partial hospital program that offers longer term programming for children and adolescents with serious emotional disturbance or autism. Students receive individualized, special education and mental health services that are integrated though out the school day.

5250 Caste Dr.

Pittsburgh, PA 15236 (Whitehall)

Educational Director: Bill Alexy;

Clinical Director: Tammy Marsico

Referrals: Dave Grabowski at 412-885-7017



What We Offer

WESLEY SPECTRUM INTEGRATED SERVICES

An acute partial-hospital track and a private academic school/partial hospital track are integrated into one program to offer short term programming for students with serious emotional disturbance. The program offers a blend of mental health and education services based on the child's individual needs.

Assessment, stabilization, and transition planning are the main areas of focus.

555 Lewis Run Rd.

Jefferson Hills, PA 15025

Educational Director: Bill Alexy;

Clinical Director: Tammy Marsico

Referrals: Dave Grabowski at 412-885-7017

WESLEY SPECTRUM SCHOOL BASED BEHAVIORAL HEALTH SERVICES

partners with schools to create positive approaches to address barriers to learning. Each partnership is unique in design to match each school's needs. The services are flexible, fluid and integrated into the school climate and culture. Some of the services include:

- Functional behavioral assessments to identify student needs and strengths
- Individual, group and therapeutic services for students
- Engagement of families through therapeutic services, parent support and education
- Facilitation of referral to community resources
- Consultation and training for all school staff

Program Director: Tammy Marsico

Assistant Director: Barbara Saunders

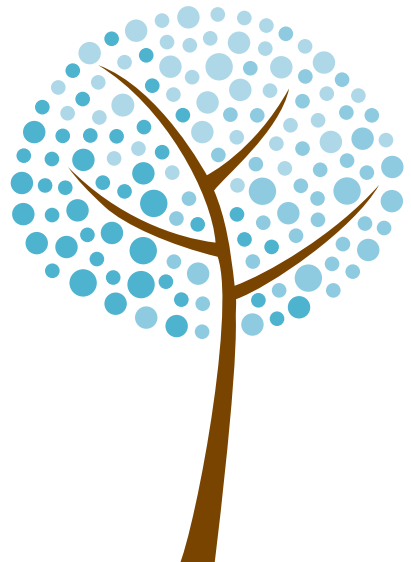
Referrals: Dave Grabowski at 412-885-7017

Caring Professionals

WESLEY SPECTRUM IN-HOME CHILD AND FAMILY SERVICES:

- *Family Therapy:* Intensive family centered services utilizing structural strategic interventions designed to provide family preservation and reunification for families involved with Juvenile Court and Allegheny County Office of Children, Youth and Families (CYF). Services include case management, assessment, communication enhancement, behavioral contracting, mental health assessment, parent education, community advocacy and crisis intervention.
- *Family Care Programs:* Intensive family centered services utilizing structural strategic interventions designed to provide family preservation and reunification for families involved with Juvenile Court and the Allegheny County Office of Children, Youth and Families (CYF). Services include case management, parenting and parent education, community advocacy and crisis intervention.

**221 Penn Avenue
Wilksburg, PA 15221
412-342-2300
Program Director: Kulsum Davidson
Referrals: Michele Baldwin at
412-342-2267**



What We Offer

WESLEY SPECTRUM COMMUNITY BASED & OUTPATIENT BEHAVIORAL HEALTH SERVICES

(Allegheny, Washington & Westmoreland Counties)

- *Family-Based Mental Health* provides in-home mental health treatment to families of children with serious emotional or behavioral difficulties who are at risk for psychiatric hospitalization or out-of-home placement.
- *Family-Focused Solution-Based* services offer mental health and case management services to families with juvenile court or CYF involvement who are at risk of disruption because of the mental health needs of one or more of its members.
Referrals Dan Gallagher at 412-342-2371
- *Mental Health Outpatient Services include* intake and assessment, psychiatric evaluation, individual and group therapy and medication checks for children, adolescents, and adults.
- *Drug and Alcohol Services* provide drug assessment, prevention, intervention education, psychiatric therapy and drug testing, for adolescents and adults with a chemical dependency concern.
- *Co-Occurring Disorders* outpatient, intensive outpatient and partial hospital services for adults who have drug and alcohol problems and mental health issues. Additional services are provided for adolescents.

**221 Penn Ave
Wilkinsburg, PA 15221
412-342-2300**

Transformational Support

26 S. Main Street
Washington, PA 15301
724-222-7500

521 Plymouth St.
Greensburg, PA 15601
724-832-3600

Program Director: Nicole Bishop

Assistant Director: Daniel Gallagher

Assistant Director: Rachel Nash

Assistant Director: Lorraine Shipley

Referrals: Jennifer Lewis (Allegheny Co.) at 412-342-2304

Referrals: Mary Beth Charlesworth (Westmoreland Co.) at 724-832-3600

Referrals: Melissa Rush (Washington Co.) at 724-222-7500

WESLEY SPECTRUM WESTMORELAND COUNTY SERVICES

- *Family Focused Solution Based:* Intensive, family therapy and case management services provided to the families of children and youth with psychiatric diagnosis that place them at risk of removal from their homes.
- *Family Therapy:* Intensive family centered services utilizing structural strategic interventions designed to provide family preservation and reunification for families involved with Juvenile Court and the Westmoreland County Children's Bureau. Services include case management, assessment, communication enhancement, behavioral contracting, mental health assessment, parent education, community advocacy and crisis intervention.

What We Offer

- *Family Care Programs:* Intensive family centered services utilizing structural strategic interventions designed to provide family preservation and reunification for families involved with Juvenile Court and the Westmoreland County Children's Bureau. Services include case management, parenting and parent education, community advocacy and crisis intervention.
Referrals: Therese Fitzpatrick, Anne Thalman at 724-832-3600
- *Transportation/Visitation Program:* transportation services for families with children who are in out of home placements.
Referrals: Jim Henley at 724-832-3600

**521 Plymouth St.
Greensburg, PA 15601
(also serves Somerset Co.)
724-832-3600
Program Director: John Frain**

WESLEY SPECTRUM PLACEMENT SERVICES

- *Foster Care* offers out-of-home placement services in the least restrictive, family-like setting, to children between the ages of birth to eighteen years of age. The program has approximately 42 approved foster homes. The Wesley Spectrum advocate counselor can address behavioral concerns, communication issues, or counsel the parent, caretaker, or child on the issues that necessitated placement. The program also serves medically needy children.
Referrals: Dorthenia Nicholson at 412-342-2300
- *Resource Parent Recruitment and certification-* Through our foster care program, ongoing recruitment and certification of resource homes occurs. Resource families are recruited and approved for traditional foster care, foster to adopt, adoption, and treatment foster care. Interested applicants should call:
Jarene Barnes or Annette Gross at 412-342-2300

Dedication to Serve

- *Adoption Services* provides an array of permanency services to children in out of home care. The permanency specialists work on identifying and approving adoptive families for children waiting for a forever family. We provide supportive services and supervision of the child's placement in a pre-adoptive home. We also can continue to provide supportive services to the child and family after the adoption is finalized through post-permanency services.
Referrals: Merri Bindas at 412-342-2300
- *Multi-dimensional Treatment Foster Care* is a treatment foster care program that is an evidence-based model for providing foster care for children with serious behavior problems referred for out-of-home placement. This model of the foster care is designed to provide an alternative to more restrictive placement alternatives for adolescents with behavioral issues that warrant out of home placement. Youth entering this program are placed in an approved treatment foster home and is assigned a treatment team to facilitate reunification home.
Referrals: Jeff Doran at 412-342-2300
- *Individual Treatment Foster Care* is a treatment foster care model that provides out of home care treatment for children and youth that necessitate out of home placement due to their mental health needs. The program offers an alternative to traditional restrictive out of home options. Children and youth entering this program are placed in an approved treatment foster home. A treatment team works with the child and child's family of origin to facilitate reunification home.
Referrals: Annette Gross at 412-342-2300

221 Penn Avenue
Wilkinsburg, PA 15221
412-342-2300

Program Director: Annette Gross
Assistant Director: Ted Orłowski
Assistant Director: Dorthenia Nicholson



WESLEY SPECTRUM SERVICES

Our Core Beliefs

- **Our Purpose is to Serve** – Wesley Spectrum Services intentionally balances serving and leading in ways that provide the greatest opportunity to advance the mission and impact the community.
- **Children, Families and Adults are at the Center of Decision Making** – At the foundation of every decision is the question: What is in the best interest of each child and family we serve?
- **Every Person is Valuable** – Every individual we serve and those who serve the organization are valuable and will be treated with dignity and respect in caring environment.
- **Every Person has Strengths** – Acquiring life-long skills, leading to real and sustainable change, begins with identifying and developing a person's strengths and talents.